



**Part Number:**

1220000

**Size:**

36.500 OD x 58.78 Long

**Tank Type:**

Propellant Tank

**Mount Style:**

Mounting Ring

**Location:**

Girth

**PMD Device:**

N/A

Composite wrapped oxygen tank with titanium mounting ring.

**Applicable Documents**

**Tank Characteristics:**

**Tank Characteristics (Metric):**

ICD

1220000\_ICD

Total Volume, in<sup>3</sup>:

51,500

Propellant Volume, in<sup>3</sup>:

51,500

Max Design Weight, lbs:

Minimum Wall Thickness, in:

Operating Pressure, psig:

935

Proof Pressure, psig:

1,403

Cryo Proof, psig:

N/A

Burst Pressure, psig:

1,870

Total Volume, L:

843.9

Propellant Volume, L:

843.9

Max Design Weight, kg:

Minimum Wall Thickness, mm:

Operating Pressure, bar:

64.47

Proof Pressure, bar:

96.73

Cryo Proof, bar:

N/A

Burst Pressure, bar:

128.93

Notes:

Tube Type:

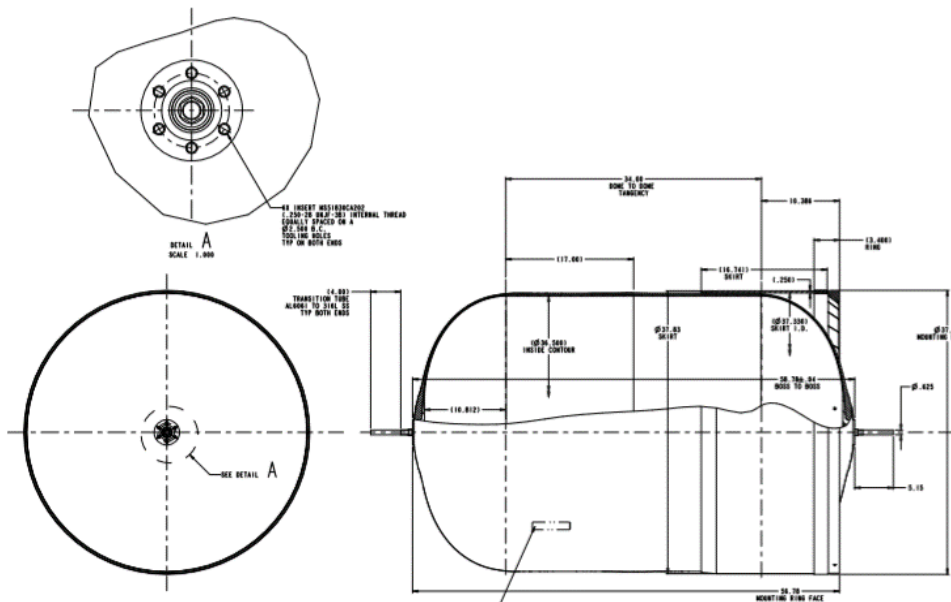
Size:

Aluminum

0.625 ID x 5.15 Long

**Applications Testing:**

**Qualifications Testing:**



3/17/2017

4401 Donald Douglas Dr.  
Long Beach, CA 90808

Telephone: 562-497-3200