



KEYSTONE ENGINEERING COMPANY

**Part Number:**

1140000

**Size:**

44.98 OD x 43.49 Long

**Tank Type:**

COPV (Xenon)

**Mount Style:**

Tabs

**Location:**

Girth

Xenon gas. Tank composite wrapped.

Applicable Documents

Tank Characteristics:

Tank Characteristics (Metric):

ICD for Xenon Tank  
1140000-ICD  
  
Qualifications Test Report  
1140083B

Total Volume, in <sup>3</sup> :	50,412
Propellant Volume, in <sup>3</sup> :	50,412
Max Design Weight, lbs:	191.8
Minimum Wall Thickness, in:	0.055
Operating Pressure, psig:	2000
Proof Pressure, psig:	2500
Cryo Proof, psig:	N/A
Burst Pressure, psig:	4000

Total Volume, L:	826.1
Propellant Volume, L:	50,412
Max Design Weight, kg:	87
Minimum Wall Thickness, mm:	1.397
Operating Pressure, bar:	137.9
Proof Pressure, bar:	172.37
Cryo Proof, bar:	N/A
Burst Pressure, bar:	275.79

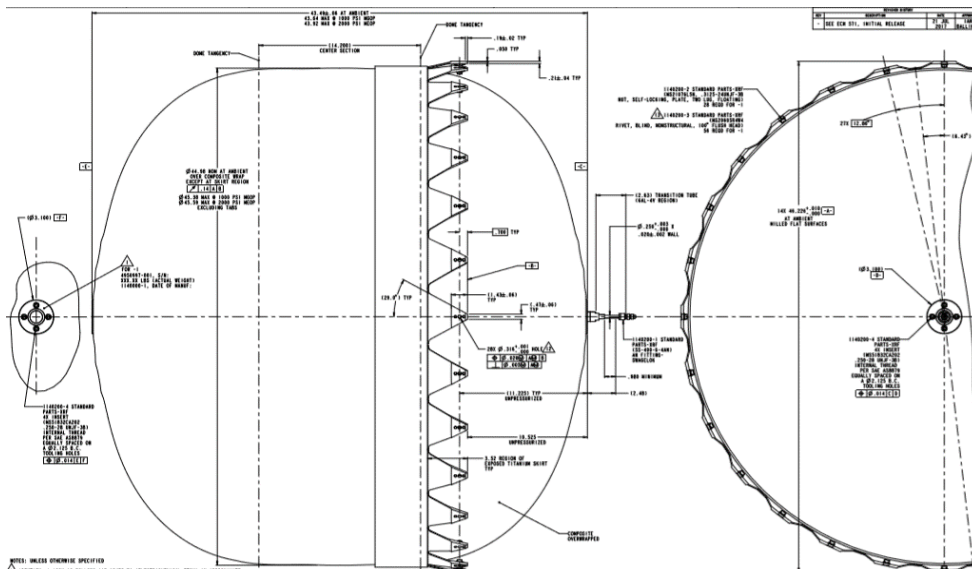
Notes:  
Actual burst pressure found during testing was 4858 psig due to hoop failure in the cylinder section.

Tube Type: \_\_\_\_\_  
Size: \_\_\_\_\_

Applications Testing:

Qualifications Testing:

- |                       |                       |
|-----------------------|-----------------------|
| Pressure Cycling Test | Static Load Test      |
| Vibration Test        | External Leakage Test |
| Impact Test           | Burst Test            |



8/16/2018

4401 Donald Douglas Dr.  
Long Beach, CA 90808

Telephone: 562-497-3200